

Nearby Learning: Points of history and artistic creation learned through mobile phone notifications from iBeacon technology.

HCI 530

Gaetano Brusolino | Heather Rohr | Anna Shannon | Khairunisa Sharif

April 9th, 2019

iBeacon Technology

- Using iBeacons, or Beacons, location based notifications can be prompted to mobile phones when a user is nearby.
- Enhances learning by adding interaction information such as detailed texts, hyperlinks, audio, and video.
- Students could optionally download an Oswego app that the notification links to rather than getting unwanted notifications.

SUNY Oswego: History and Artwork

- Students would have the opportunity to walk around campus and learn about its history from their phones from an optional prompt on their mobile phone.
- Students can learn about peer and professor works on display in galleries and throughout hallways to have a richer experience for what they added to campus.

Sheldon Hall

Sheldon Hall as the first building on campus provides a starting point for the interactive notifications; although, students can start wherever they please around campus.

The statue of Edward Sheldon as a “*point of interest*” where a Beacon would be placed.

Learning becomes interactive because the student is *at* the site of the history. Notifications can be unique to each site.



Shineman Hall

The lecture hall that focuses on STEM- Science, Technology, Engineering, and Mathematics.

It neighbors the renovated Wilber Hall. It was originally designed with concerns for the environment and use of energy. Food can be purchased at the “Fusion Cafe.” It opened in 2013, replacing Snygg Hall.

Named after Dr. Richard Shineman, a former SUNY Oswego chemistry professor. He and his wife Dr. Barbara Sheldon created the Richard S. Shineman Foundation in 1988 to financially aid students seeking to attend SUNY Oswego.

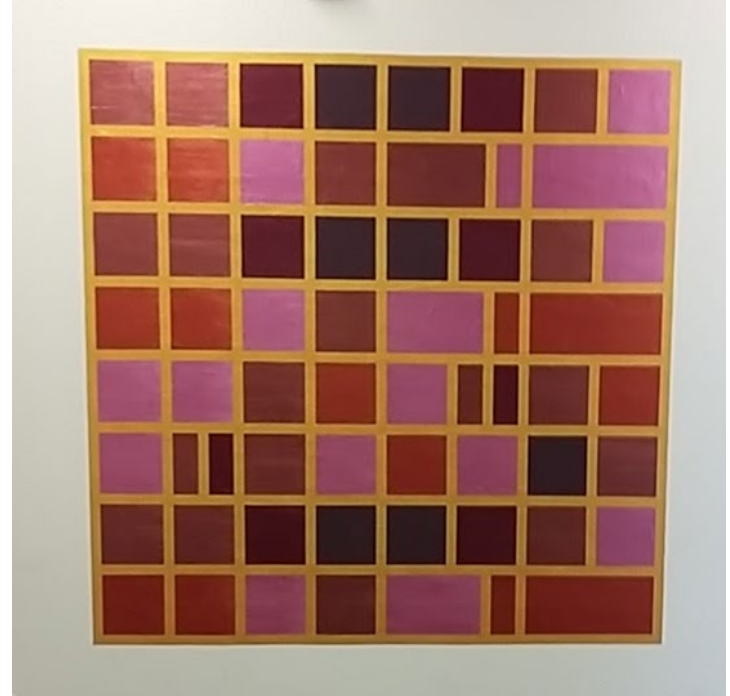


Dr. Craig Graci's Paintings

Cognitive Science professor and a computer scientist, Craig Graci, painted artworks that represent different songs and music pieces. He has a passion for music and nonrepresentational art.

Depending on the piece, the shade of paint could signify a pitch and the length of the box could imply timing in the rhythm. A number of his paintings are found on the fourth floor of Shineman Hall; one might be seen in the Computer Science office (Shineman 396).

As soon as the doors from one elevator opens on the top floor, students can notice the colors of artwork inspired by notes in a piece by Ludwig van Beethoven.



Dr. Craig Graci's Paintings

URL Link: "To A Wild Rose"

http://www.cs.oswego.edu/~blue/chromesthetic_paintings/taste/rose/rose.html



Marano Campus Center

Located in the center of campus, north of Cooper Dining Hall, the building includes a convocation/ice arena, educational rooms and student organizations.

Among the departments housed in the campus center are Psychology, Experiential Learning, a career asset geared toward preparing students for the professional world, and Accessibility Resource Services.

Originally named the Campus Center when it officially opened in 2006, “Marano” was in 2014 after Lorraine Marano donated \$7.5 million



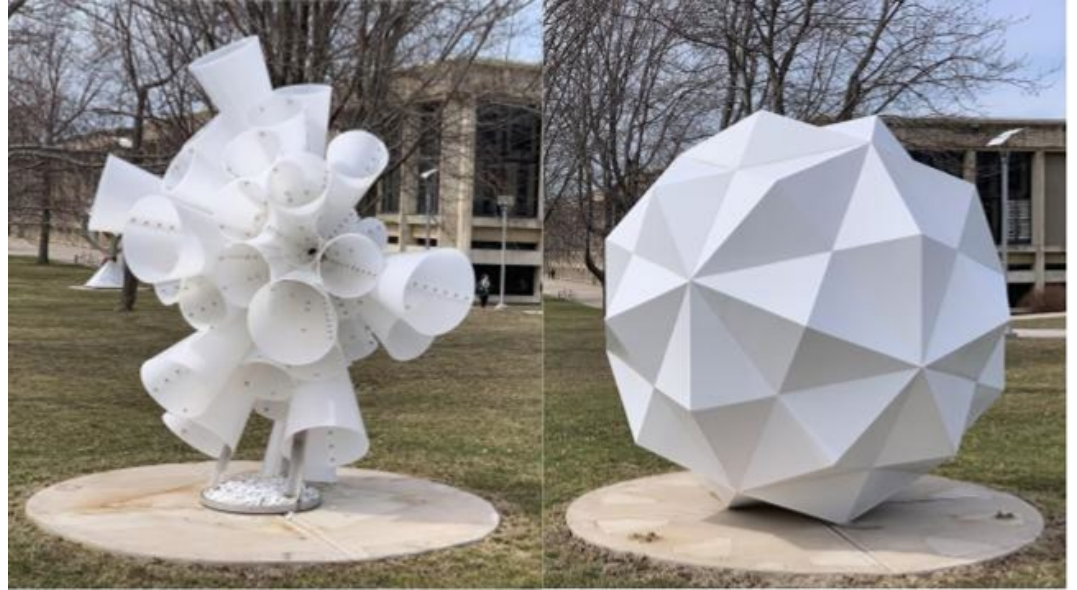
Gifts around the Marano Campus Center

Left side - fountain of class 1987; upper right corner - coin of class 1986; down right corner - rock of class 2007



Sculpture Garden

Will get info tomorrow, emailed a person who is in charge of this field



Tyler Hall

A popular area for the School of Communication, Media and the Arts.

Tyler Hall is a building that features the performing arts with vocal performances, musicals, operas, dramatic plays, and orchestras. The Waterman Theater can seat about 525 people. It also has practice rooms for music students and other rehearsal spaces. The “Box Office” sells tickets.

It features artwork from the “Tyler Art Gallery.”

Originally built around 1965, Tyler Hall recently has been renovated with new lobbies, entrances, classrooms, and a digital arts lab.



PEACE: FREE AND EASY - Memorial

The memorial's theme, "Peace: Free and Easy," comes from the song "Wooden Ships" from Crosby, Stills & Nash. This memorial will exemplify that peace can be obtained easily if we all want it.

"Free and Easy Forever Fund" raised money and created the memorial in honor of a few late Oswego students.

Alumni **Richard Caproni '89** and **Michael Hannan '89** lost their lives in the 9/11 attacks. **Lynne Hartunian '89** and **Colleen Brunner '90** died in the bombing of Pan Am Flight 103 (along with Syracuse University students flying by Lockerbie, Scotland).



Thank you