

Beacons of Oswego

A technology commonly used by major retail companies is called iBeacons, or Beacons. These Beacons are small, easily maintainable bluetooth low-energy (BLE) devices that notify nearby users through smartphone notifications. These Beacons provide the opportunity to send hyper-local information to users, which allows them access to information relative to their current surroundings of about one to three meters. In example, a local grocery store can setup 10 Beacons within their store. Upon entering the store, the first Beacon may notify the consumer of today's deals. After tapping that notification, the consumer would be presented with the details of the sale and which aisle to find the products in. A different Beacon throughout the store may provide the user a request for assistance if the user has been near the same Beacon for a set amount of time, which could shortly read, "Request a Whole Foods Associate". Beacons have limitless opportunities for companies and users.

When it comes to a learning environment such as a museum or a nature walk, Beacons can provide contextual information for users based on their location. Notifications can detail information regarding paintings, monuments, statues, statistics, and even more. In the context of a college campus, most colleges have been around for decades and have an extensive history as to its founders and the construction of its buildings.

For the purpose of this field study, SUNY Oswego is used as the site of interest. Beacon technology can be utilized during Orientation Tours and outside of regular class time to learn more about the campus. Notifications will appear on a smartphone at the top of a screen while a device is unlocked, or show up on the lock screen when the user is near an iBeacon. One of the features of using notifications to support learning is the fact that notifications can act differently depending on how the device is used. If a user has their device unlocked, the notification can be present at the top of the screen for several seconds before it dismisses itself. If a user's device is locked and in their pocket, a notification will appear on their lockscreen about the point of interest nearby, at which they can decide how to act without worrying about a timer.

These location-based and timed notifications can be beneficial to the process of learner for people at many stages. Tour Guides are able to use this information to create a story about the timeline of SUNY Oswego during orientation tours, and allow learners to read and engage with information on their personal device. For student organizations or professors, notifications can be built into activities and integrated into curriculums. The openness of the notifications also allows for future change, such as adding augmented reality integration with an mobile app. Using machine learning, users could potentially use their cameras to "recognize" an object, and then interact with the given information.

HCI 530

TEAM MEMBERS: Gaetano Bruscano, Heather Rohr, Anna Shannon, and Khairunisa Sharif

Heather Rohr's Field notes from Outside Sheldon Hall

The notes provide information that could be featured in our learning technology.

Dedication Plaque

Nearby Sheldon Hall along the green grass, there is a plaque dedication plaque in honor the 100th anniversary of the 1918 Armistice that ended World War I and those who served. It was placed on campus in 2018.

The plaque reads:

Twenty members of the Oswego Normal School joined to fight in World War I, with one student, Jesse Merle Hewitt, killed in France in 1918. The school also hosted an Army Training Corps, which graduated 400 men and featured drills for new recruits as well as vocational classes taught by Oswego faculty.

After the war, on Memorial Day in 1924, the school planted 20 Norway maple trees near Sheldon Hall along Washington Boulevard to honor those who served.



During World War I, the campus hosted an Army Training Corps, which graduated 400 men and featured drills for new recruits as well as vocational classes.

(This was outside of Sheldon Hall, between parking lots E-29 and C-8 East. E-29 and E-27, the parking lots that surround Sheldon Hall were for employees and visitors with special permission. To the west of Sheldon Hall, parking lots C-8 are commuting students. C-8 West has parking spaces for the handicap and drivers with electric cars. Near by the C-8 parking are the lecture Halls, Shineman, Wilbur, and Park. I had walk on the grass. This photo was probably taken December 2018 after a graduation ceremony).

Shineman Hall

The lecture hall that focuses on STEM- Science, Technology, Engineering, and Mathematics.

It neighbors the renovated Wilber Hall. It was originally designed with concerns for the environment and use of energy. Food can be purchased at the "Fusion Cafe." It opened in 2013, replacing Snygg Hall.

Named after Dr. Richard Shineman, a former SUNY Oswego chemistry professor. He and his wife Dr. Barbara Sheldon created the Richard S. Shineman Foundation in 1988 to financially aid students seeking to attend SUNY Oswego.



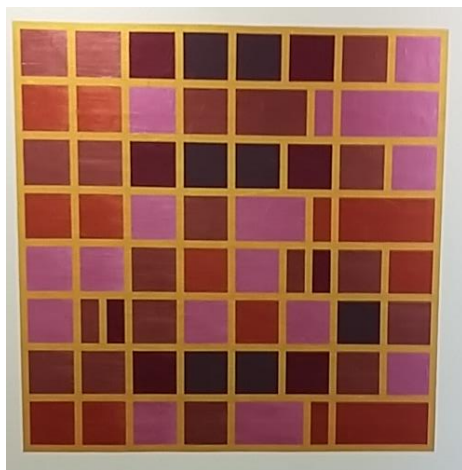
(This is an old picture of Shineman Hall taken during a campaign of some sort; probably November 2018 the building had a “tag.” Gaetano also took pictures in April ; the building peaked our interest. Inside Shineman Hall, there were images that reflect a “science” theme. Visitors may have the chance to see paintings by one of the college professors. Outside the hall was an art tower. I recall there being an additional top portion but it was reported “missing” or “stolen.” After December 2018 commencement, a student revealed a “bell” to ring inside the tower. April 2nd, my group looked at the tower in the sunny afternoon. We did not know who made it.)



Dr. Craig Graci's Paintings.

Cognitive Science professor and a computer scientist, Craig Graci, painted artworks that represents different songs and music pieces. He has a passion for music and nonrepresentational art.

Depending on the piece, the shade of paint could signify a pitch and the length of the box could imply timing in the rhythm. A number of his paintings are found on the fourth floor of Shineman Hall; one might be seen in the Computer Science office (Shineman 396).



As soon as the doors from one elevator opens on the top floor, students can notice the colors of artwork inspired by notes in a piece by Ludwig van Beethoven.

(These were photograph I took previously. We most students see them for the first, they do not know the meaning behind them. Some expressed appreciation when they learned the meaning behind the paintings from a student, another professor like Dr. David Vampola, or Dr. Craig Graci himself. We do not always remember which songs are which.)

Here is a URL Link one of his other paintings: “To A Wild Rose”

http://www.cs.oswego.edu/~blue/chromesthetic_paintings/taste/rose/rose.html

Tyler Hall

A popular area for the School of Communication, Media and the Arts.

Tyler Hall is a building that features the performing arts with vocal performances, musicals, operas, dramatic plays, and orchestras. The Waterman Theater can seat about 525 people. It also has practice rooms for music students and other rehearsal spaces. The "Box Office" sells tickets.

It features artwork from the "Tyler Art Gallery."

Originally built around 1965, Tyler Hall recently has been renovated with new lobbies, entrances, classrooms, and a digital arts lab.



(The weather nice on April 2, 2019. I took pictures of the other artwork alongside the building, too. Some were paintings and some were somewhat mosaic. Renovation was still in the works and some walkways in the back were blocked with a chain.)

PEACE- FREE & EASY (Memorial)

The memorial's theme, "Peace: Free and Easy," comes from the song "Wooden Ships" from Crosby, Stills & Nash. This memorial will exemplify that peace can be obtained easily if we all want it.

"Free and Easy Forever Fund" raised money and created the memorial in honor of a few late Oswego students.

Alumni Richard Caproni '89 and Michael Hannan '89 lost their lives in the 9/11 attacks. Lynne Hartunian '89 and Colleen Brunner '90 died in the bombing of Pan Am Flight 103 (along with Syracuse University students flying by Lockerbie, Scotland). A photograph of Lynne and Colleen can be found inside Penfield Library.



(In September 2018 I took a photograph when flowers were left in memory of the students. On April 2, 2019 I had shown Gaetano, Anna and Khairunisa the memorial behind Tyler Hall; it was quite a walk. They did not know that this existed. During charity walks and runs, I notice the memorial more often. The weather was nice in April, but the plants were livelier before the winter.)

Some References:

Parking Guide & Campus Map (for SUNY OSWEGO).

https://www.oswego.edu/parking/sites/www.oswego.edu.parking/files/webparkingmap_07.20.18_ada.pdf *

*Some notes were also from the FALL 2015 * SPRING & SUMMER 2016 flyer

Free and Easy Forever Fund

<https://alumni.oswego.edu/s/1552/bp18/interior.aspx?sid=1552&gid=1&pgid=1599>

THE JOURNAL OF THE AMERICAN INSTITUTE OF ARCHITECTS. *SUNY Oswego Tyler Hall Renovation.*

<https://www.architectmagazine.com/project-gallery/suny-oswego-tyler-hall-renovation>

State University of New York at Oswego. *Richard S. Shineman Center.*

<https://www.oswego.edu/facilities-services/buildings/richard-s-shineman-center>

State University of New York at Oswego. *Veterans Day dedication honors 100th anniversary of World War I Armistice.*

<https://www.oswego.edu/news/story/veterans-day-dedication-honors-100th-anniversary-world-war-i-armistice>

Craig Graci. "To A Wild Rose."

http://www.cs.oswego.edu/~blue/chromesthetic_paintings/taste/rose/rose.html